



Automated Timekeeping, Inc.
 16111 Cairnway Drive, #260
 Houston, TX 77084
 Phone: 281-855-8926
 Fax: 281-855-3677
 sales@automatedtimekeeping.com

NOVAtime 4000 – New User Interface

Overview

Automated Timekeeping is pleased to announce the planned general release of the new user interface (UI) changing the look and feel of the NOVAtime’s Employee Web Services (EWS), Supervisor Web Services (SWS) and Administrator Web Services (AWS) portals after the May 4th NOVAtime 4000 SaaS update. Once applied to NOVAtime’s hosting facilities / data center, the new UI will be available to all clients for immediate use. The new UI is expected to be applied on May 5, 2012.

The screenshot shows the NOVAtime 4000 web interface. At the top, there is a navigation menu with tabs for Attendance, Scheduler, Employees, Reports, Preferences, EWS Setup, Users Setup, Access, Tools, Company Setup, Rules Setup, Expense, NEWS, Payroll, and HW Devices. Below the menu is a sub-menu with options like Overview, Summary, Timesheet, Schedule, Point System, History, In Out Board, Posting, Unclaimed, Access Control, Access Control Board, Events, and Import. The main content area displays a 'Pay Period' dropdown set to '03/25/2012 (Sun)-04/07/2012 (Sat)', a 'Last updated' timestamp of 'Monday, 03/26/2012 5:53 PM', and a 'Group By' dropdown set to 'Facility'. Below this is a data table with columns for Facility, My Employees (Employees, Pay Period 4/9), Timesheet Status (OPEN, SUBMIT, Approve, PAYROLL), Sch.Hr, Total, Regular, OT-1, OT-2, OT-3, HOLWK, and SalEx.

Facility	My Employees		Timesheet Status				Total Hours							
	Employees	Pay Period 4/9	OPEN	SUBMIT	Approve	PAYROLL	Sch.Hr	Total	Regular	OT-1	OT-2	OT-3	HOLWK	SalEx
[400] TEMPA	1076	1	0	0	0	0	0.00	0.00	0.00	0.00	0.00	0.00	0.00	0.00
[s22] s22	1	1	0	0	0	0	0.00	0.00	0.00	0.00	0.00	0.00	0.00	0.00
Totals	1077	2	0	0	0	0	0.00	0.00	0.00	0.00	0.00	0.00	0.00	0.00

Why a new UI?

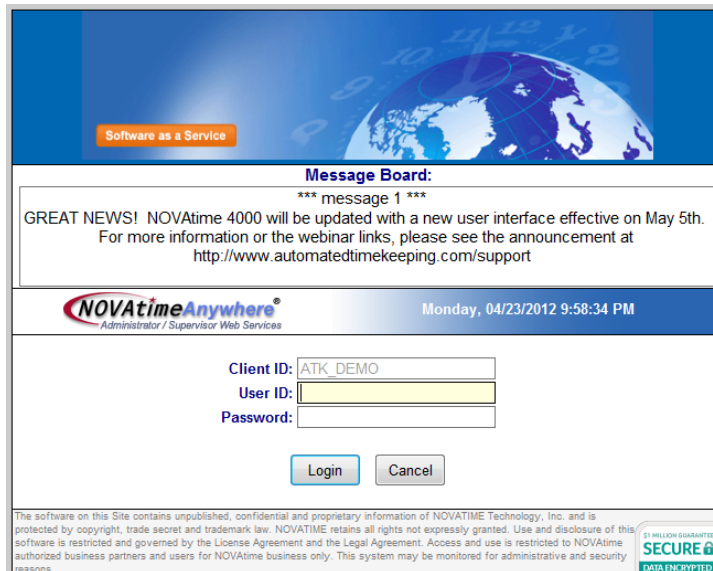
The benefits of changing the NOVAtime 4000’s look and feel are listed below:

- ✚ Time for a change! NOVAtime’s web user interface was introduced in 2003 and has had only minor updates.
- ✚ Improved usability. Based on recent usability studies, most users are accustomed to tabs and sub-tabs (or pages and sub-pages). The legacy category-design is not as intuitive and takes longer to adapt to the category-concept located at the upper right hand corner.
- ✚ Staying on top of the latest trend and technology. The new UI is built using the native HTML and CSS3 technology. It’s adopted by Firefox, Safari, Google Chrome and IE.
- ✚ Support for tablet devices. Building the application in native HTML and CSS3, NOVAtime 4000 has better support across modern desktop and mobile browsers. The new tabs / sub-tabs now work well in Android tablets and iPads using native HTML and CSS3. When you resize a page, the tabs will resize accordingly.
- ✚ Lighter and faster. In addition to a cleaner look-and-feel, the legacy design uses graphic images for each icon and tab; it takes a bit longer to load these graphic images. , The page load process is faster with native HTML and CSS3.

What’s New?

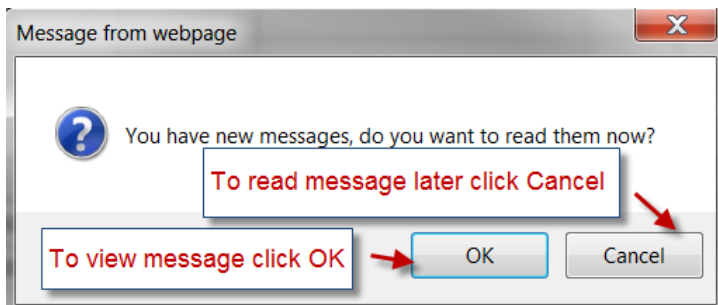
The major changes are listed as follows:

1. New Login page



a.

2. Upon Login, you will get the following message if you have messages waiting. Click on OK to view the message. Click on Cancel to read the message later.



3. Replace the category icons with first-level tabs (or category-level tabs).

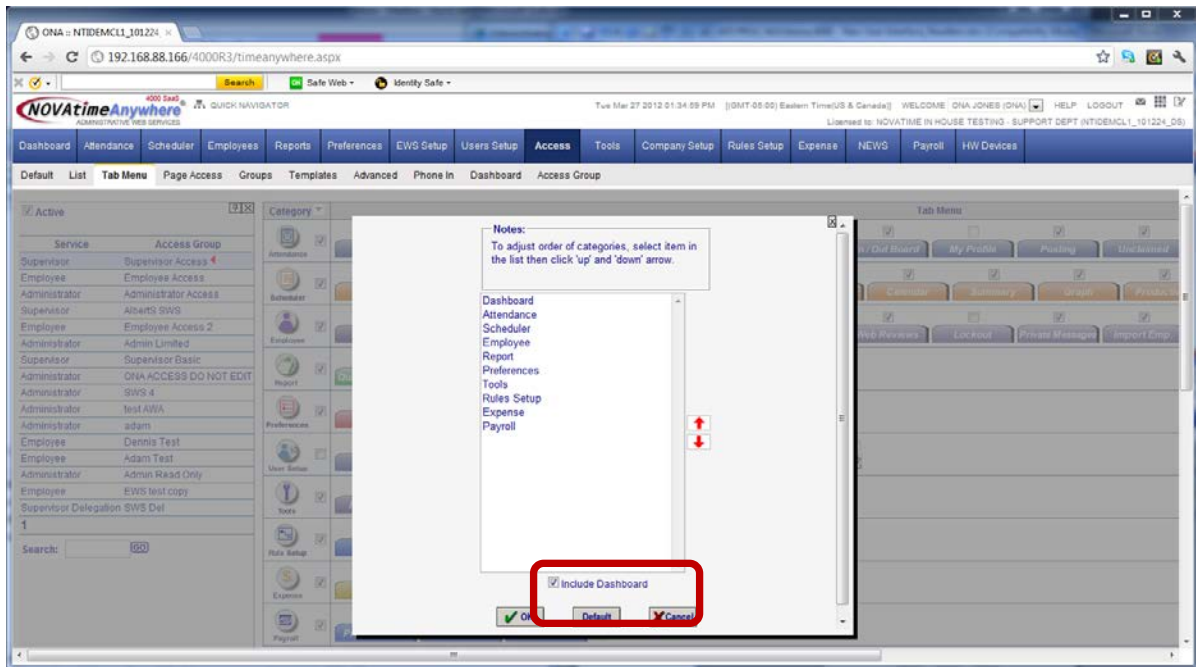


a.

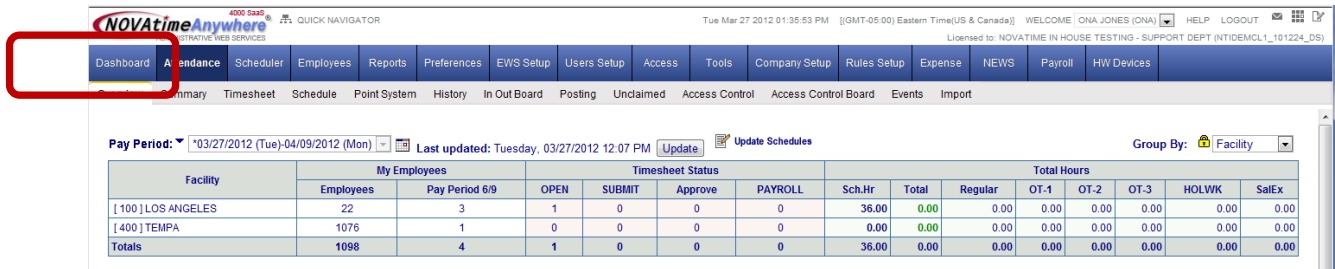
4. The current tabs (Pages) will be placed as second-level tabs. They may be accessed by clicking at the secondary-level tab or from the dropdown menu.
 - a. Access from the secondary-level tab: no change.
 - b. Access from the dropdown menu: this allows a user to navigate to a category-tab (or the first-level tab) and select the applicable secondary-tab directly. It will eliminate the page-loading time of the category's first page.

6. Dashboard may be represented as a menu option (existing functionality).

- a. Go to the Access – Tab Menu page and enable the “Include Dashboard” option. Navigate up and down to position the Dashboard location.



- b. The Dashboard will appear on first-level tab.



For further information, please contact Automated Timekeeping at 281-855-8926 or support@automatedtimekeeping.com